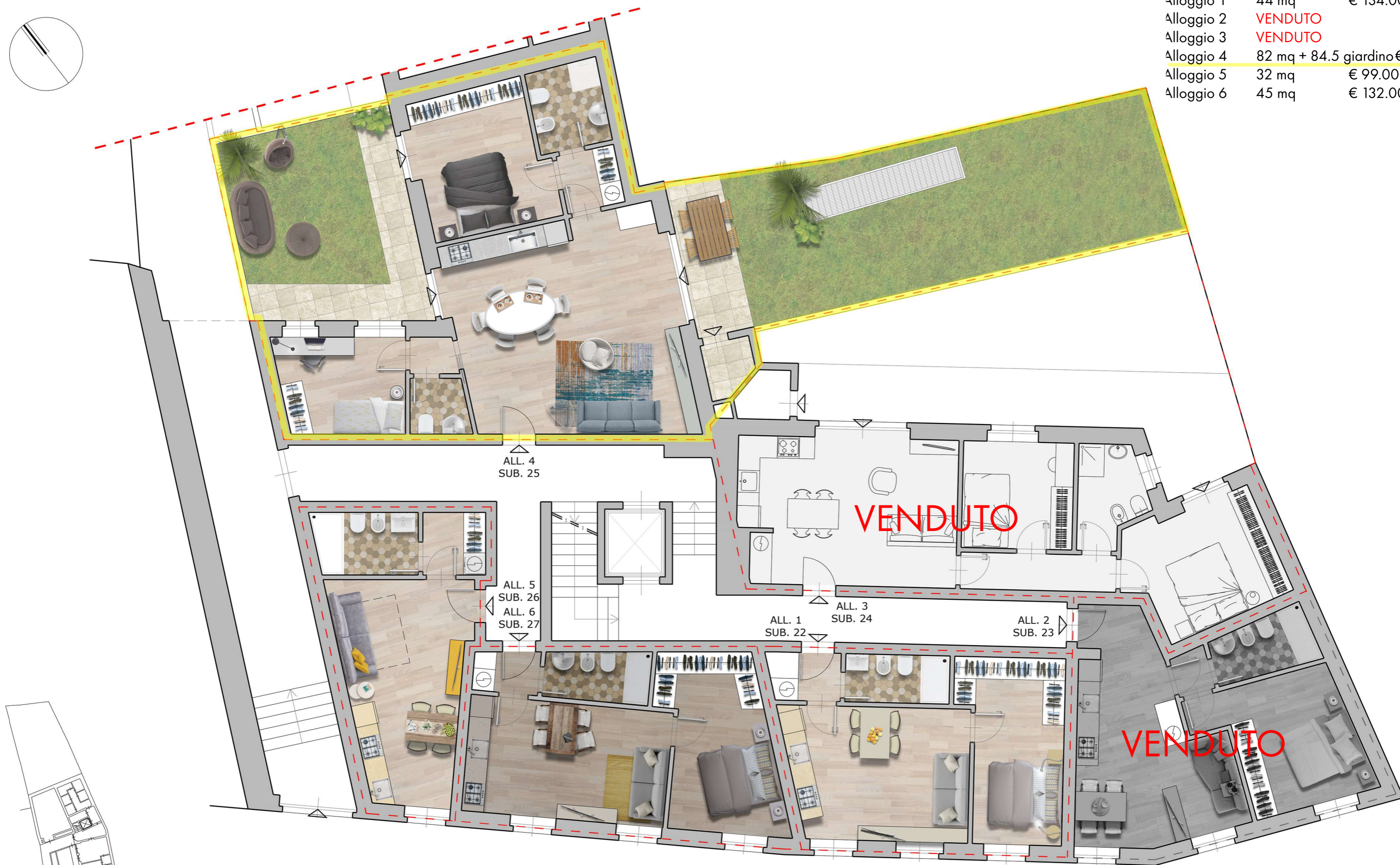


Alloggio 1	44 mq	€ 134.000
Alloggio 2	<b>VENDUTO</b>	
Alloggio 3	<b>VENDUTO</b>	
Alloggio 4	82 mq + 84.5 giardino	€ 294.000
Alloggio 5	32 mq	€ 99.000
Alloggio 6	45 mq	€ 132.000



ALL. 4  
SUB. 25

ALL. 5  
SUB. 26  
ALL. 6  
SUB. 27

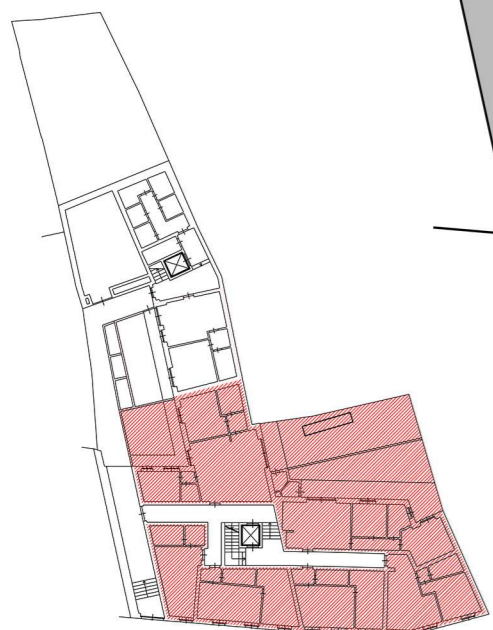
ALL. 1  
SUB. 22

ALL. 3  
SUB. 24

ALL. 2  
SUB. 23

**VENDUTO**

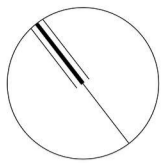
**VENDUTO**



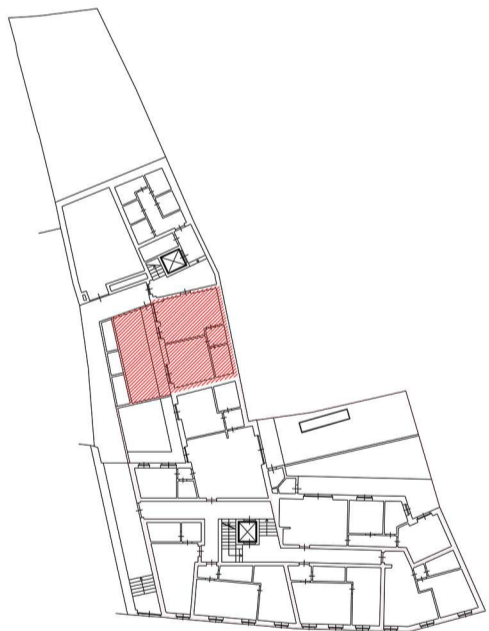
**PIANO TERRA**  
SALITA DI GRETTA 15



LE METRATURE SONO PURAMENTE INDICATIVE E NON COSTITUISCONO ELEMENTO CONTRATTUALE



Alloggio 19 50 mq + 28 giardino € 168.000

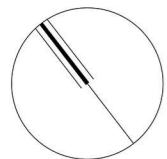


**PIANO TERRA**  
SALITA DI GRETTA 15

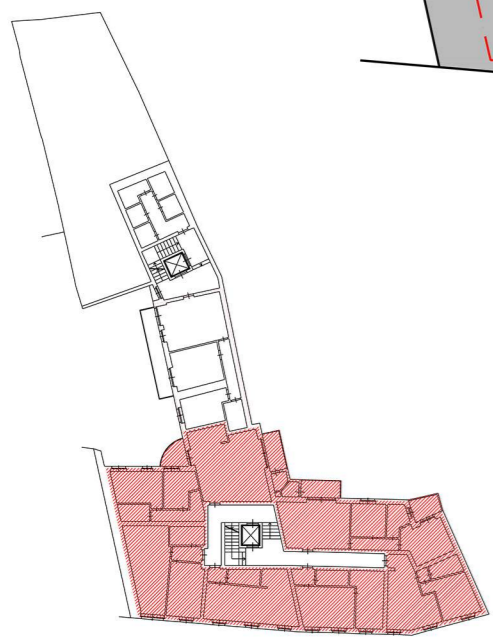
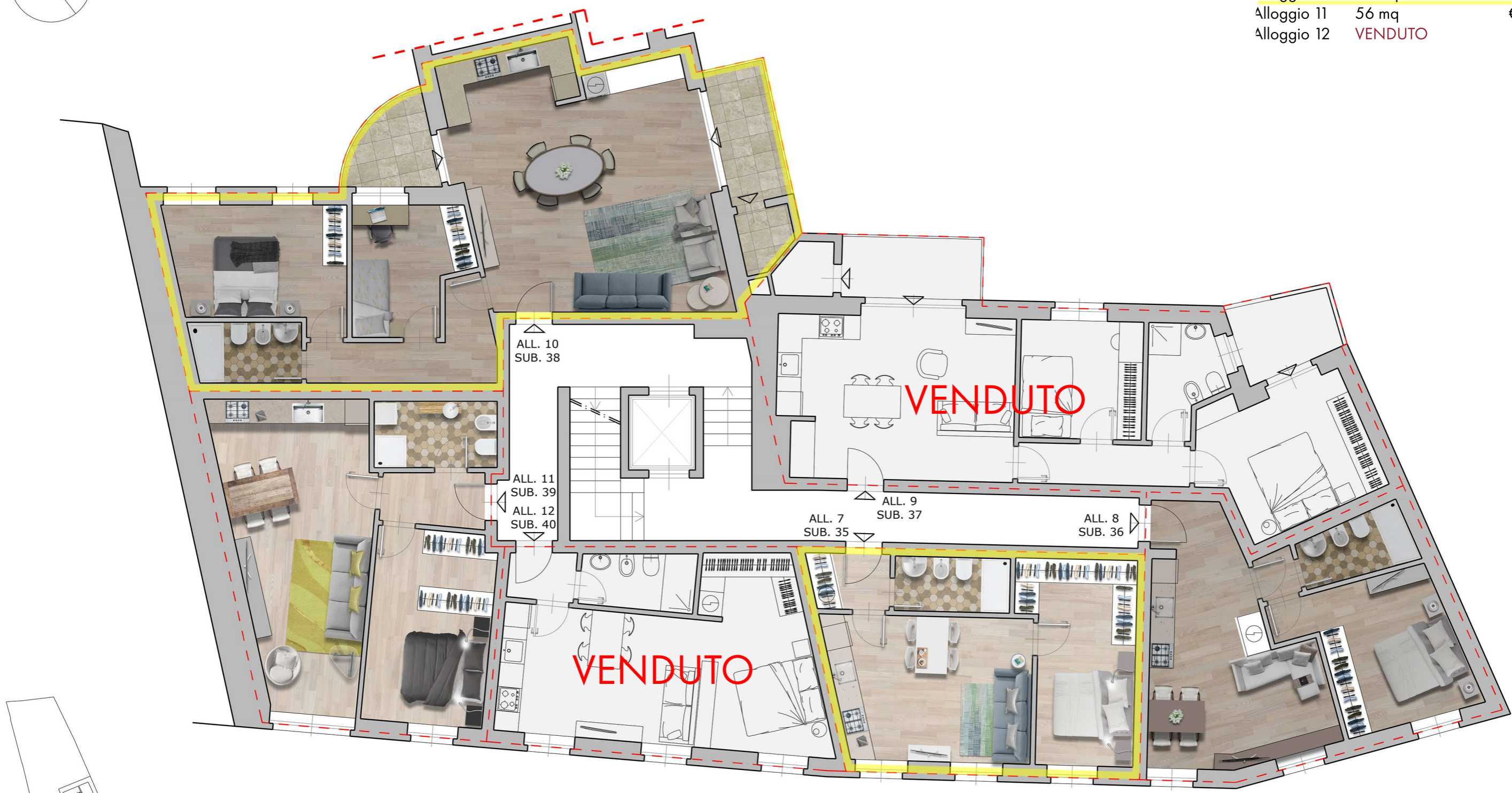


**TIRABORA**  
CANTIERI  
040 631754  
Via del Coroneo n°17  
INFO@CANTIERITIRABORA.IT  
WWW.CANTIERITIRABORA.IT

**STUDIO ARCHIPROJECT**



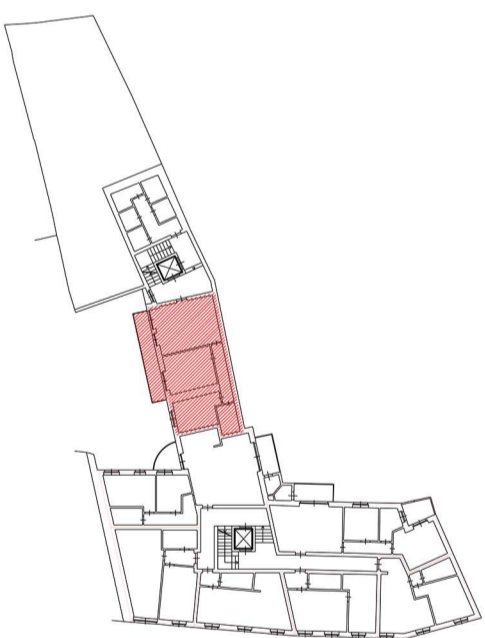
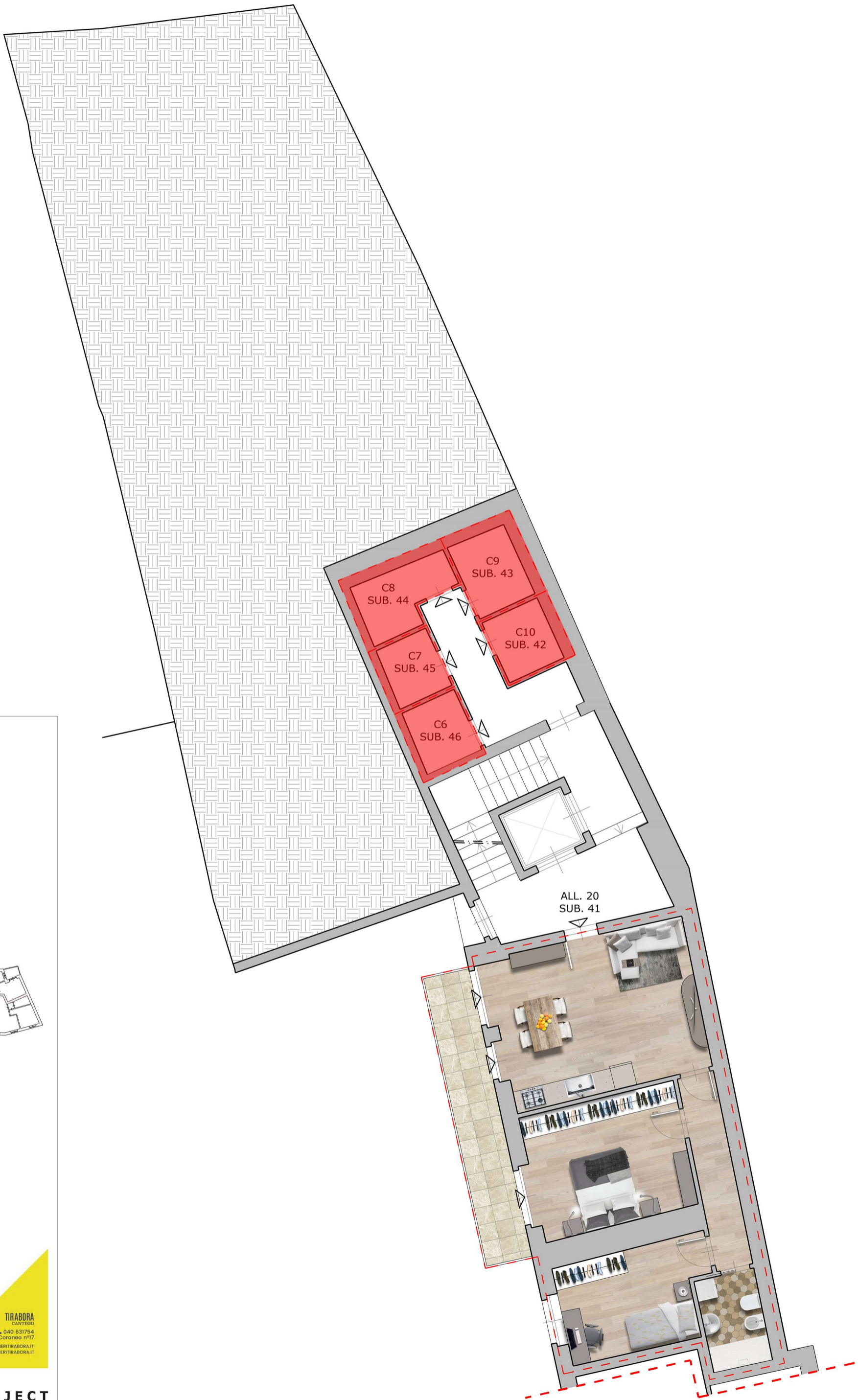
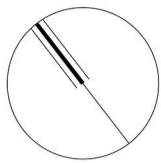
Alloggio 7	44 mq	€ 144.000
Alloggio 8	48 mq	€ 144.000
Alloggio 9	VENDUTO	
Alloggio 10	82 mq + 13.5 terrazza	€ 246.000
Alloggio 11	56 mq	€ 177.000
Alloggio 12	VENDUTO	



PIANO PRIMO  
SALITA DI GRETTA 15



LE METRATURE SONO PURAMENTE INDICATIVE E NON COSTITUISCONO ELEMENTO CONTRATTUALE



**PIANO PRIMO**  
SALITA DI GRETTA 15



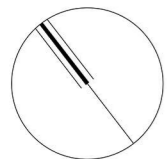
**TIRABORA**  
CANTIERI  
040 631754  
Via del Coroneo n°17  
INFO@CANTIERITIRABORA.IT  
WWW.CANTIERITIRABORA.IT

**STUDIO ARCHIPROJECT**

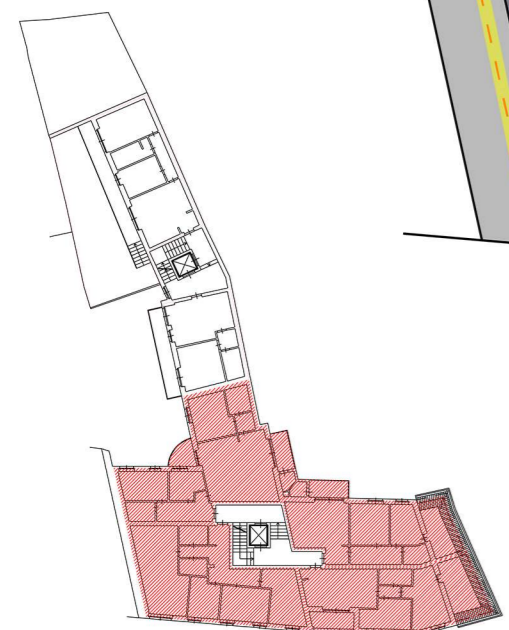
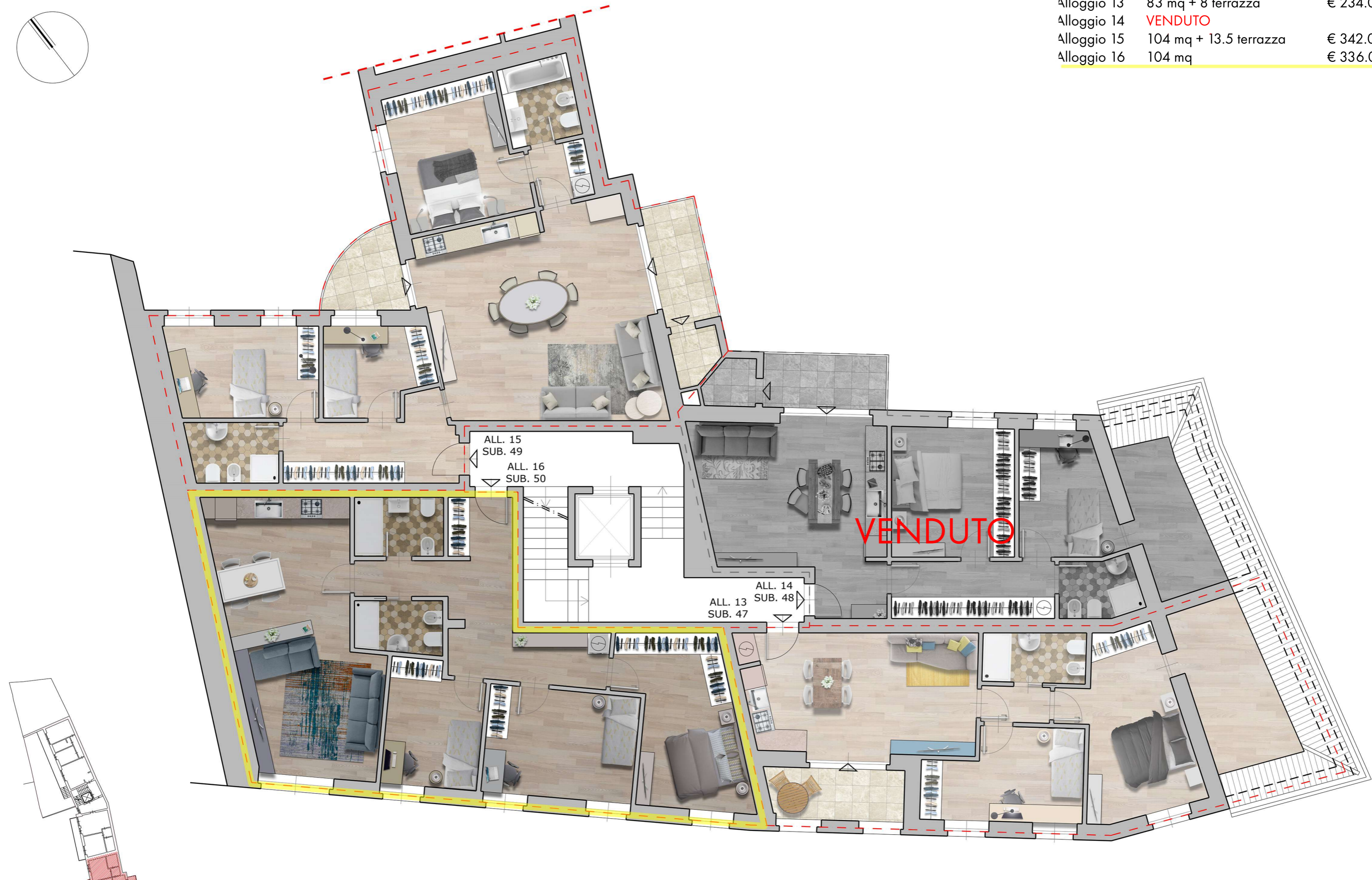


Alloggio 20 / 71 mq + 12 mq terrazzo € 219.000

LE METRATURE SONO PURAMENTE INDICATIVE E NON COSTITUISCONO ELEMENTO CONTRATTUALE



Alloggio 13	83 mq + 8 terrazza	€ 234.000
Alloggio 14	<b>VENDUTO</b>	
Alloggio 15	104 mq + 13.5 terrazza	€ 342.000
Alloggio 16	104 mq	€ 336.000

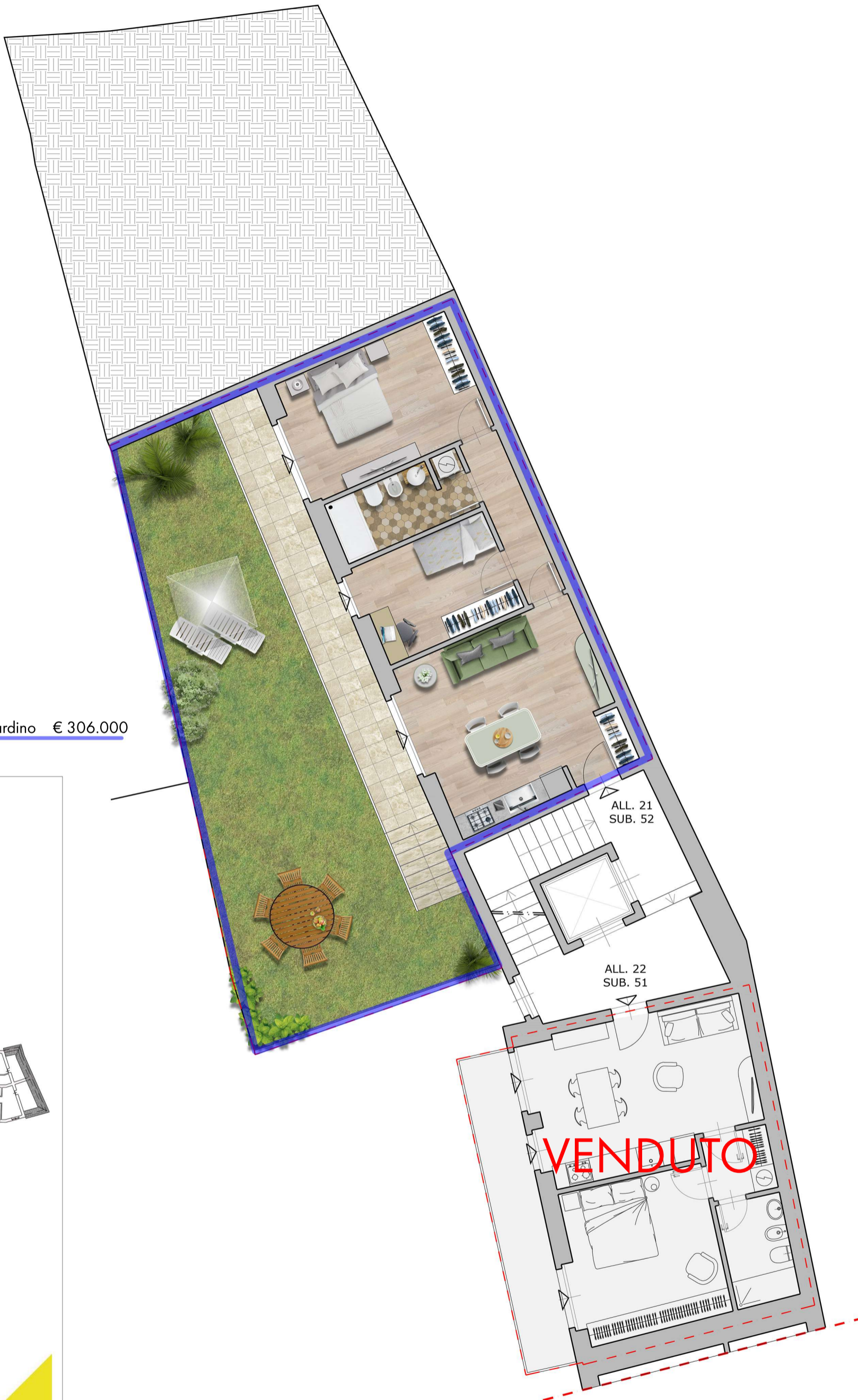
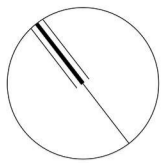


**VENDUTO**

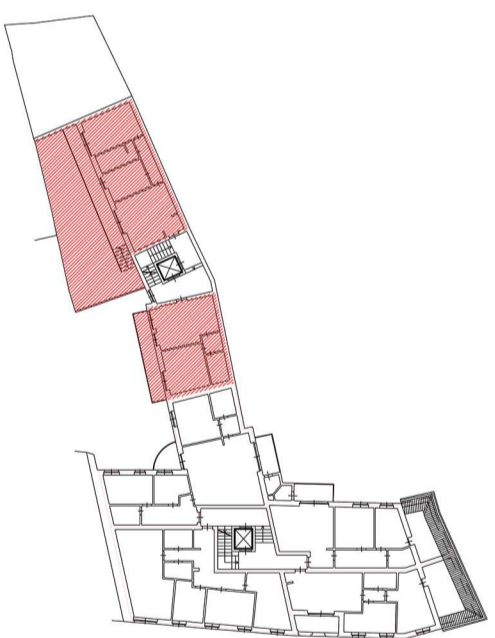
PIANO SECONDO  
SALITA DI GRETTA 15



LE METRATURE SONO PURAMENTE INDICATIVE E NON COSTITUISCONO ELEMENTO CONTRATTUALE



Alloggio 21 67 mq + 81 giardino € 306.000  
 Alloggio 22 **VENDUTO**



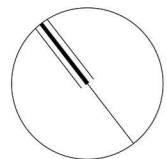
**PIANO SECONDO**  
 SALITA DI GRETTA 15



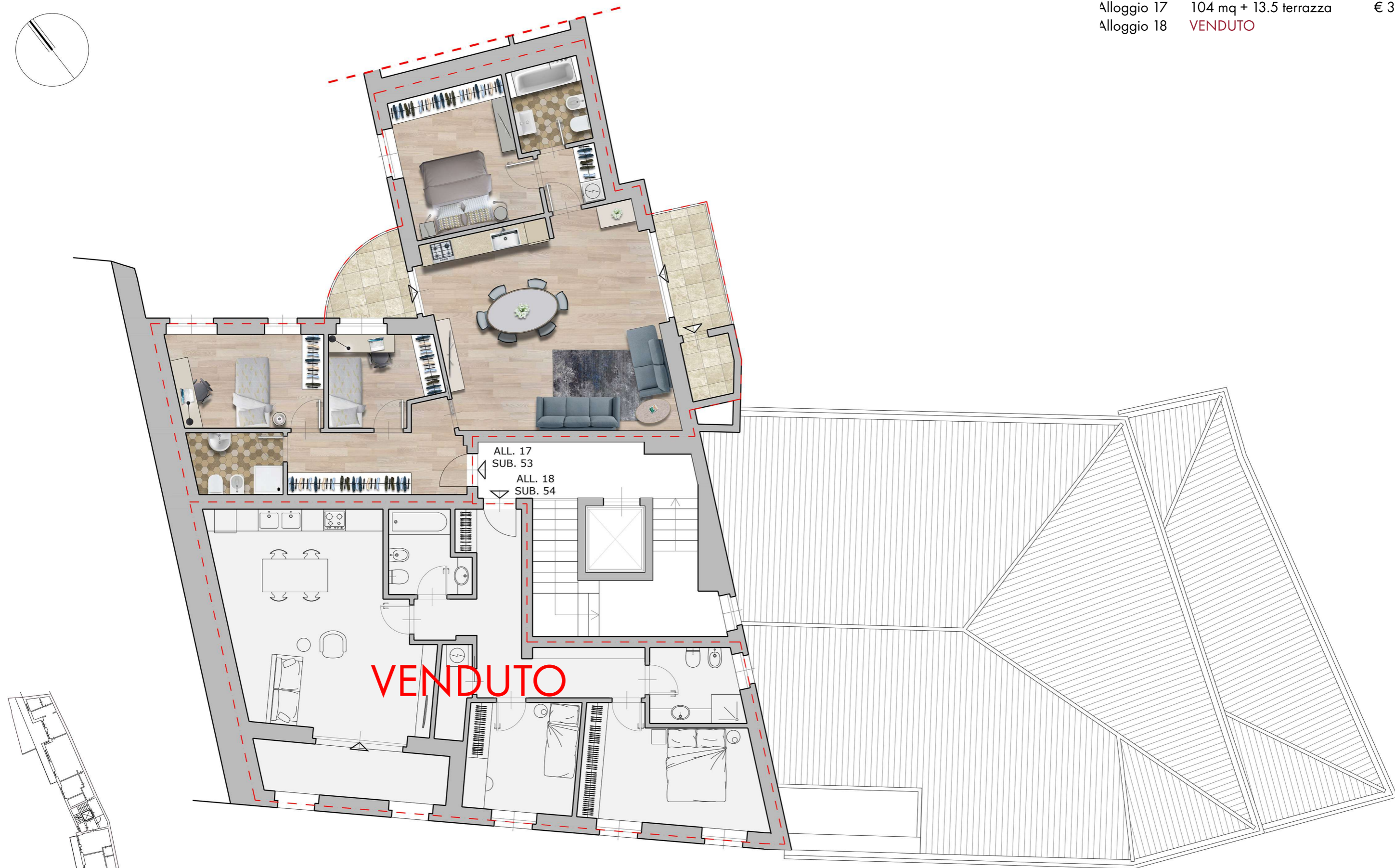
**TIRABORA**  
 CANTIERI  
 ☎ 040 631754  
 Via del Coroneo n°17  
 INFO@CANTIERITRABORA.IT  
 WWW.CANTIERITRABORA.IT

**STUDIO ARCHIPROJECT**



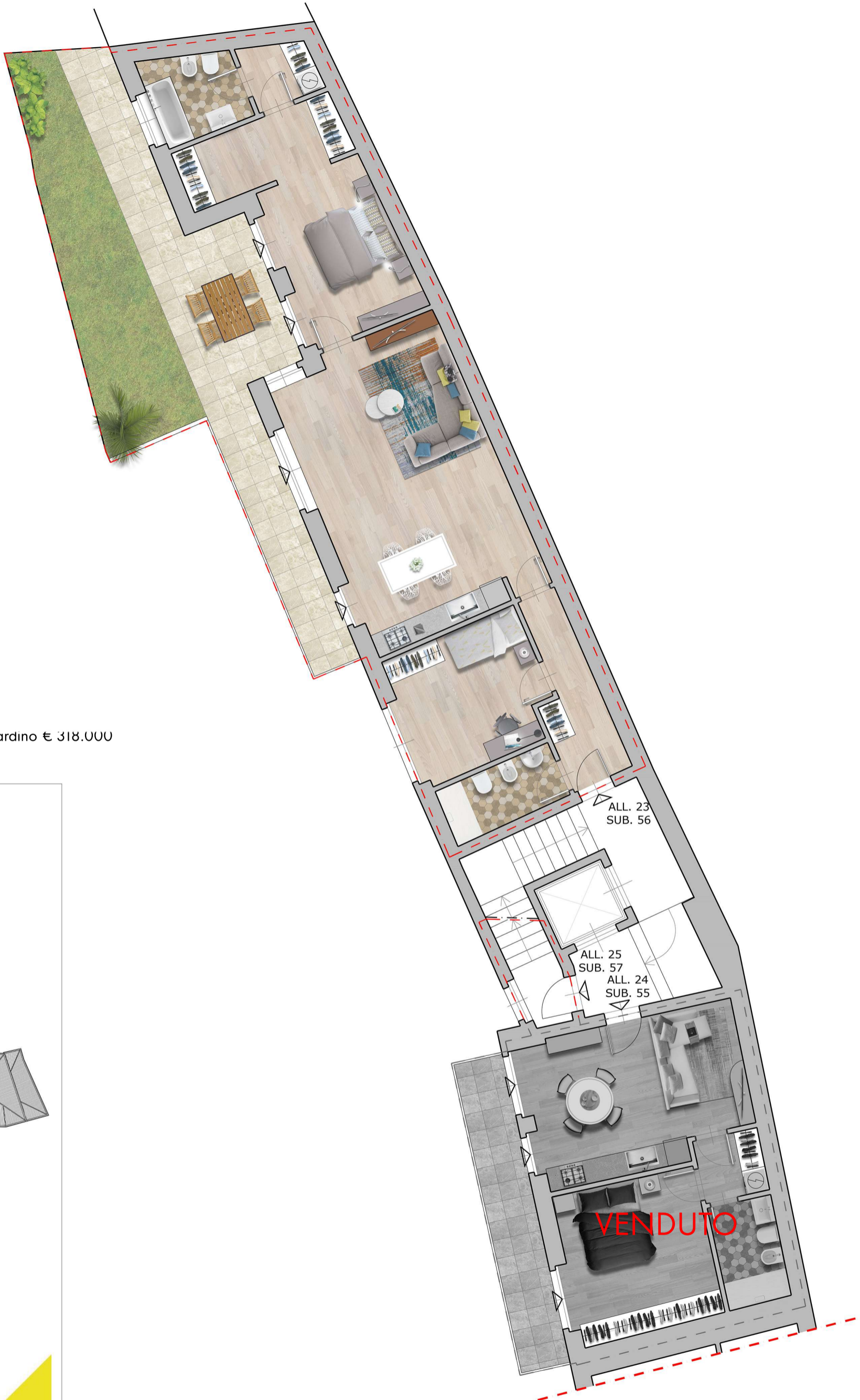
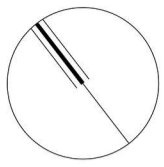


Alloggio 17 104 mq + 13.5 terrazza € 340.000  
Alloggio 18 **VENDUTO**

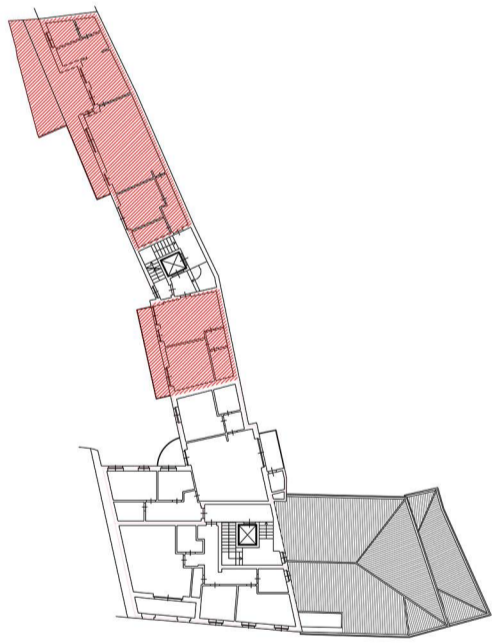


ALL. 17  
SUB. 53  
ALL. 18  
SUB. 54

**VENDUTO**



Alloggio 23 103 mq + 48 giardino € 318.000  
 Alloggio 24 **VENDUTO**



ALL. 23  
SUB. 56

ALL. 25  
SUB. 57  
ALL. 24  
SUB. 55

**VENDUTO**

**PIANO TERZO**  
SALITA DI GRETTA 15

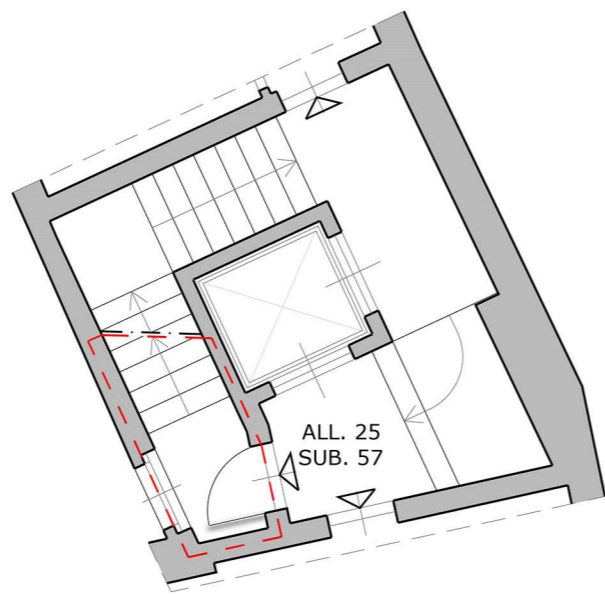
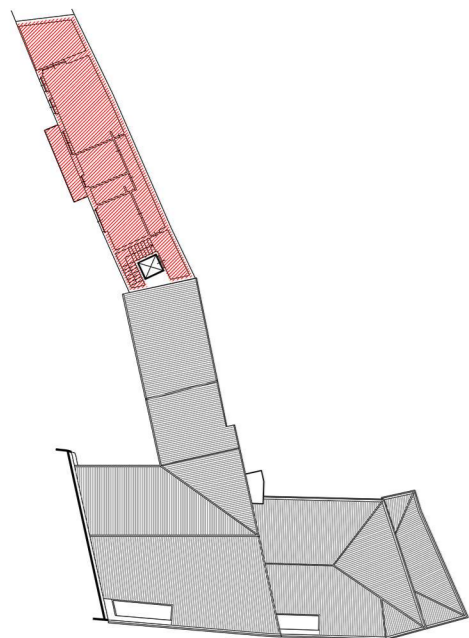
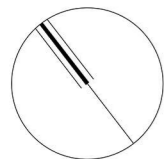


**TIRABORA**  
CANTIERI  
040 631754  
Via del Coroneo n°17  
INFO@CANTIERITIRABORA.IT  
WWW.CANTIERITIRABORA.IT



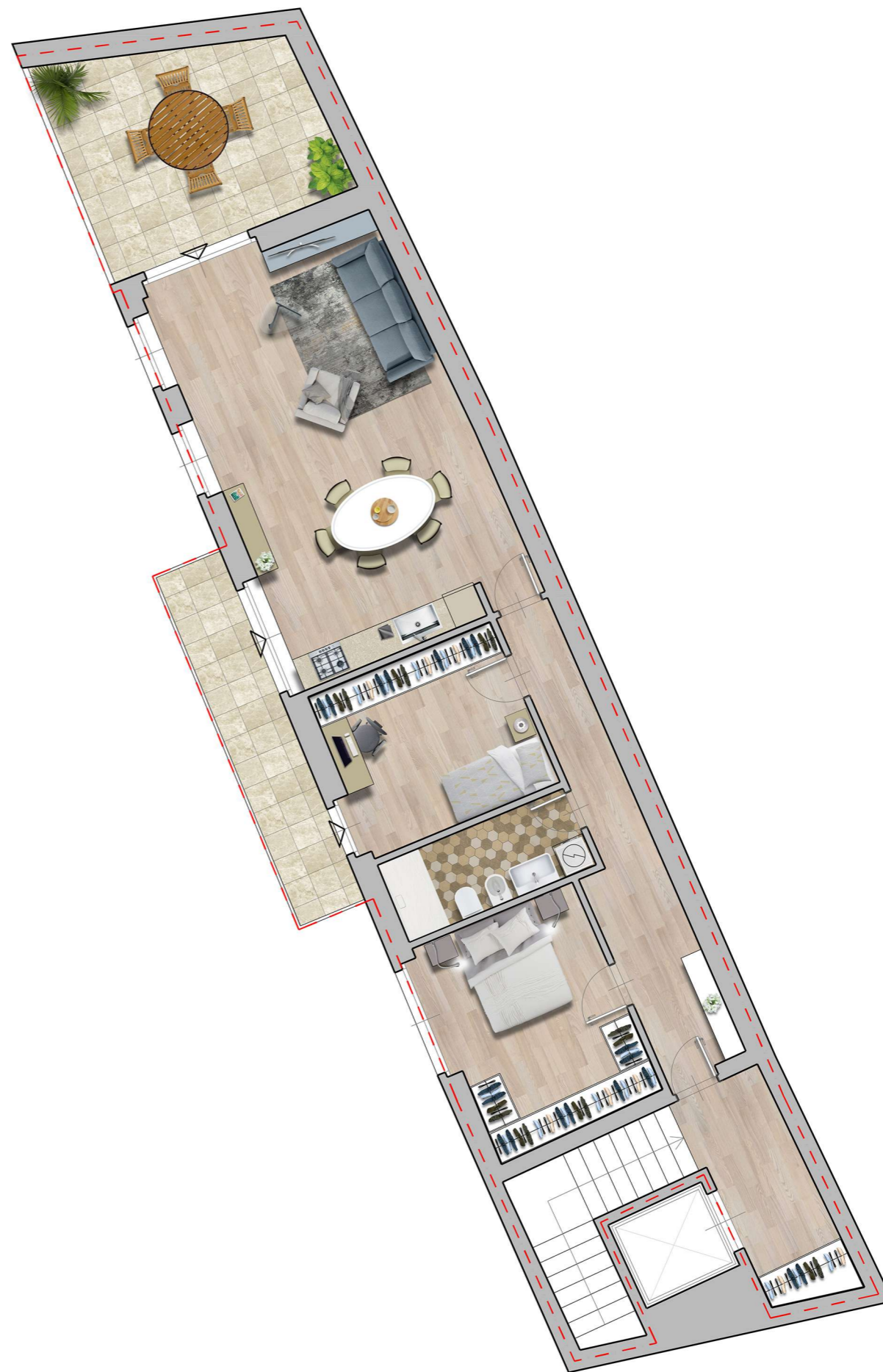
LE METRATURE SONO PURAMENTE INDICATIVE E NON COSTITUISCONO ELEMENTO CONTRATTUALE





Alloggio 25 107 mq + 25 terrazzo € 330.000

**ALLOGGIO 25**  
**SUB. 57**  
PIANO TERZO E QUARTO  
SALITA DI GRETTA 15

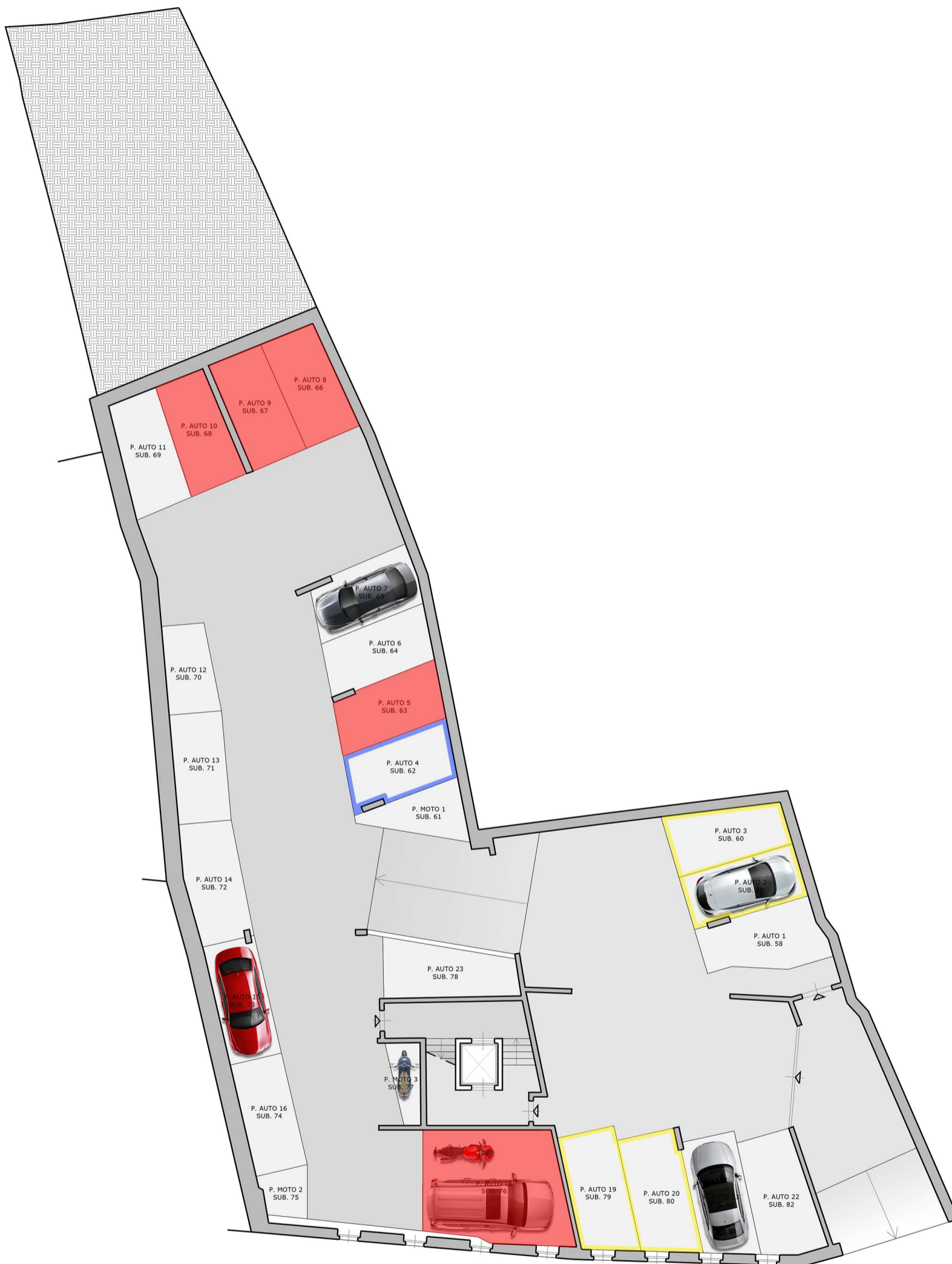
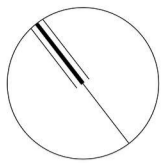


**PIANO QUINTO**  
SALITA DI GRETTA 15



TIRABORA  
CANTIERI  
040 831754  
VIA DEI CONFINI 17  
INFO@CANTIERTRABORA.IT  
WWW.CANTIERTRABORA.IT

LE METRATURE SONO PURAMENTE INDICATIVE E NON COSTITUISCONO ELEMENTO CONTRATTUALE



**AUTORIMESSA**  
SALITA DI GRETTA 15  
SCALA 1:200



**TIRABORA**  
CANTIERI  
040 831754  
Via del Coroneo 11/7  
INFO@CANTIERTRABORA.IT  
WWW.CANTIERTRABORA.IT